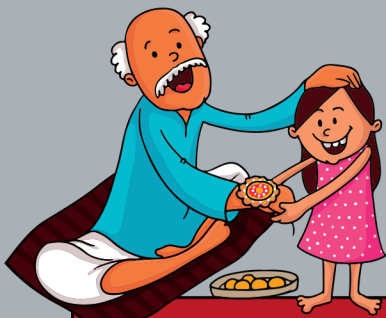




CULTURALLY RESPONSIVE ASSESSMENTS

Culturally responsive practice is an essential component of quality family-centered services. Early intervention practitioners should seek to understand the cultures of the families they serve. In addition to race and ethnicity, families' cultures may include socioeconomic backgrounds, origins, beliefs, child-rearing practices, and other factors unique to each family. Participation-based assessments create opportunities to better understand the child's strengths, interests, and capabilities within the context of their family.



Culturally responsive assessments...

Involve families as active decision-makers. Include gathering information about the family's culture, priorities, expectations, and daily activities.



Culturally responsive assessments...

Result in outcomes that match the family's priorities and real-life routines.



Culturally responsive assessments...

Occur in the preferred language of the family.



Culturally responsive assessments...

Focus on the child's development within a specific culturally-relevant family context.

Examining your practices in light of the cultural norms of the family can help you conduct a culturally responsive assessment.



Family, Infant and Preschool Program
of the
J. Iverson Riddle Developmental Center

(C) 2023. Family, Infant and Preschool Program. All rights reserved. www.FIPP.org



NC DEPARTMENT OF
HEALTH AND
HUMAN SERVICES